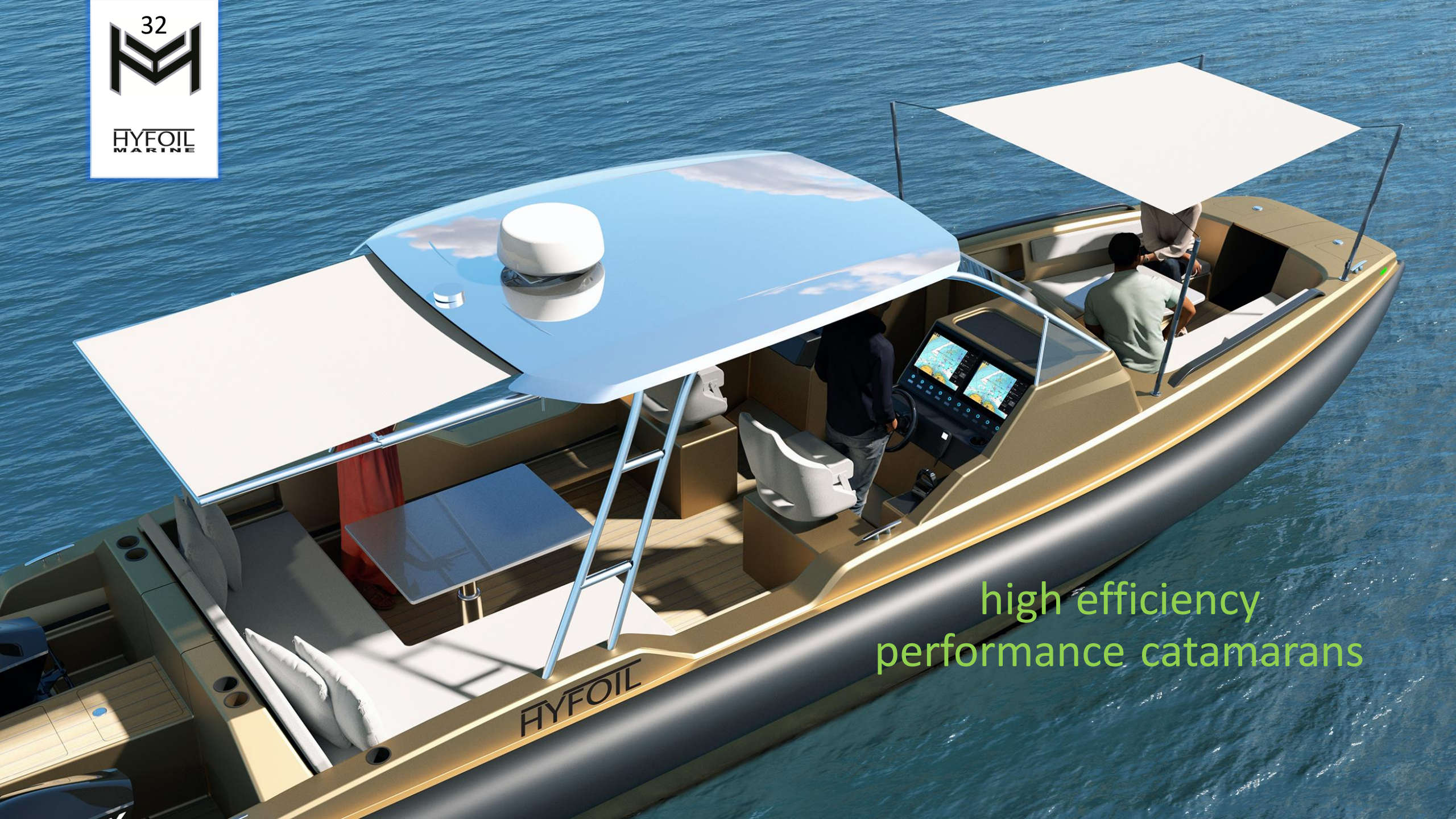


32



HYFOIL  
MARINE



high efficiency  
performance catamarans

# Introduction to HYFOIL

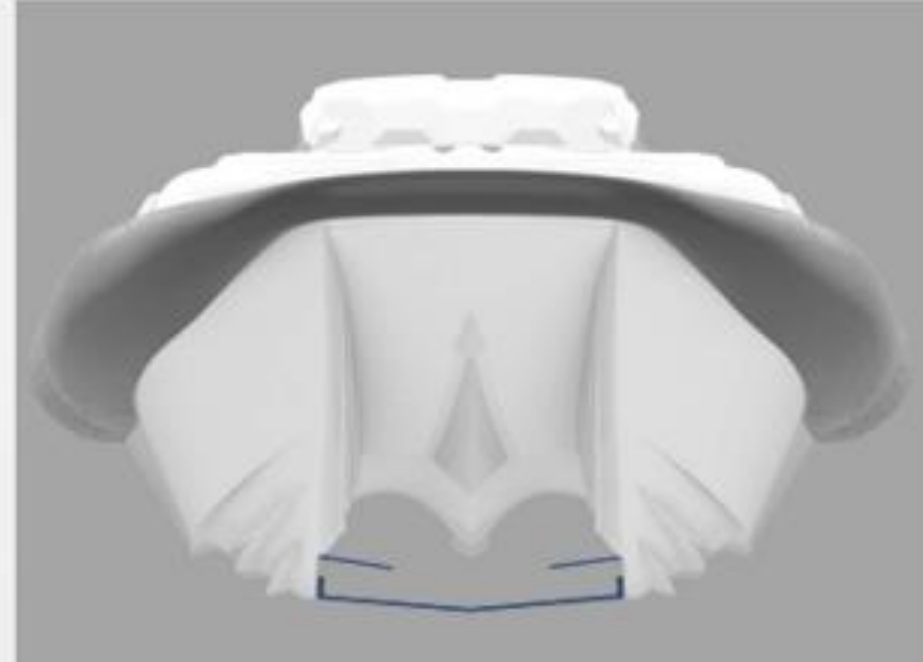
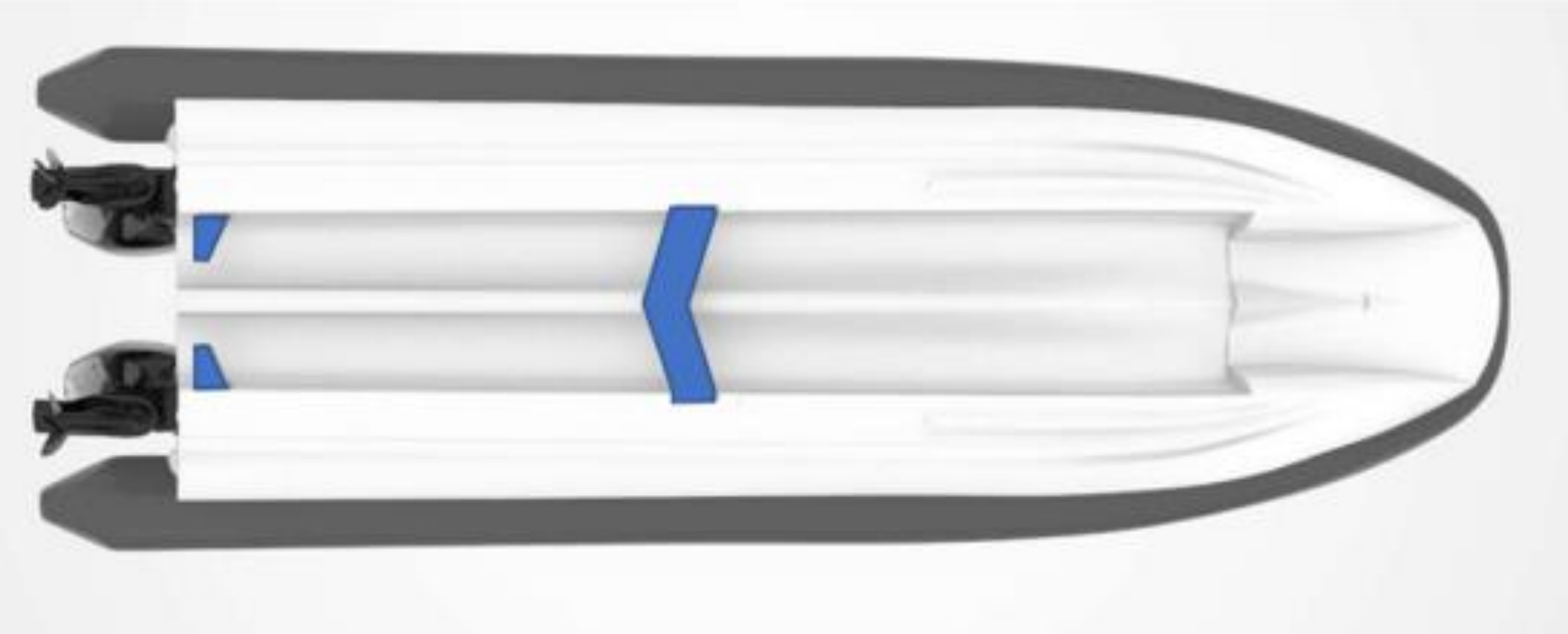
Enhancing legacy technologies with modern computational fluid dynamics in collaboration with the patent-originator of hydrofoil-assisted technology, HYFOIL Marine currently offers interchangeable sets of foils with modular deck layouts to produce a variety of high-performance ribs for recreational, adventure and commercial boat owners.

HYFOIL Marine employs the most modern materials, technologies and sustainable practices to produce ultra-efficient vessels that are USCG compliant with CFR for US Marine Manufacturers, NMMA certified using American Boats & Yacht Council standards, and built by ABYC certified master marine technicians.

HYFOIL 22 redesign launching 2024

HYFOIL 28 redesign launching now

HYFOIL 32 new concept design launching 2024



## Hydrofoil technology that's easy to use

HYFOIL Marine designs hydrofoil-supported catamarans that ride on top of water with the hulls engaged enough to support a smooth ride – even in rough sea states. These ultra-contemporary unsinkable boats are easy to manage and come with spacious layouts ready to be accessorized with an endless variety of technical components. Currently available with fully battery-powered electric engines.



Half the worry,  
twice the fun

Exceptional comfort and sense of control are what make HYFOILs so unique.

Compared to a traditional marine vessel, the light weight of HYFOILs make them easy to store, transport, launch, and helm. Specialized engineering enables precision handling like no other, traveling at speed with ease that's unmatched. The shallow draft and long-range efficiencies make adventures even more accessible, supported by a robust static foil system that is unobtrusive. To top it off, HYFOILS can be tailored for different speed, efficiency and handling characteristics with an interchangeable foil system.

**HYFOIL**  
**MARINE**

32  


HYFOIL  
MARINE



HYFOIL 32 can be powered with single or twin engines

Fully battery-powered:

**Twin 80 kW**

50+ nm range w/ 165 kWh @30 knots

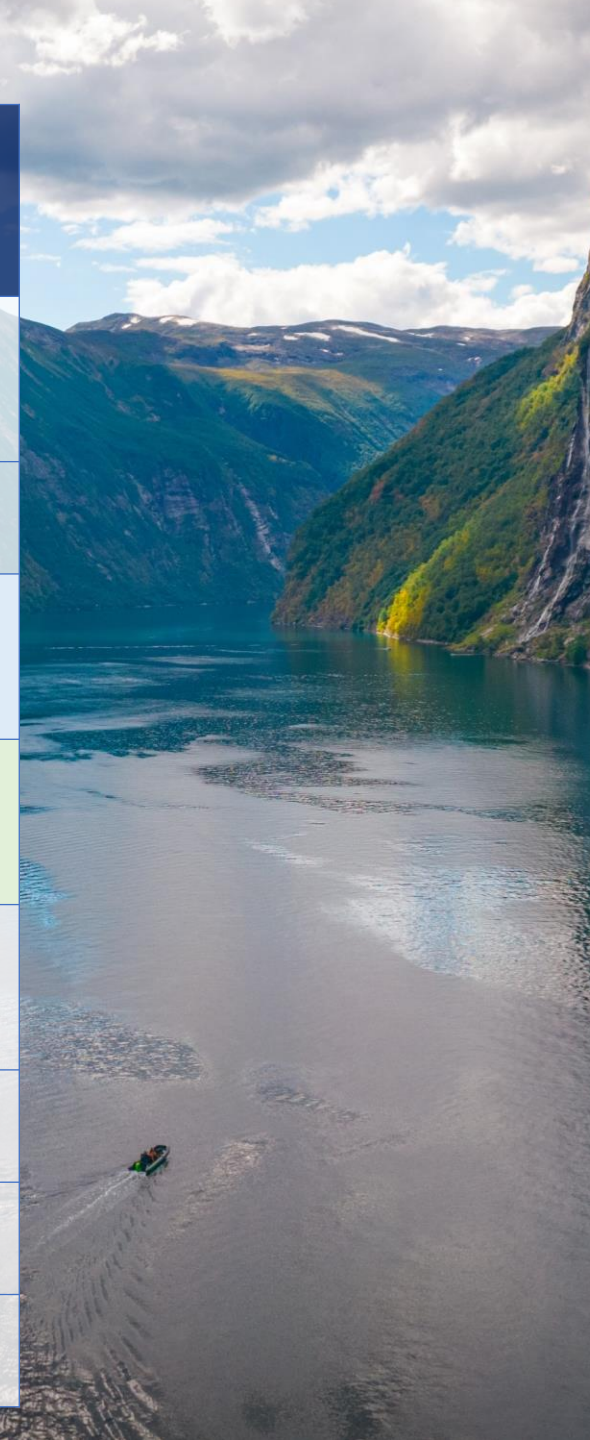
Combustion engine:

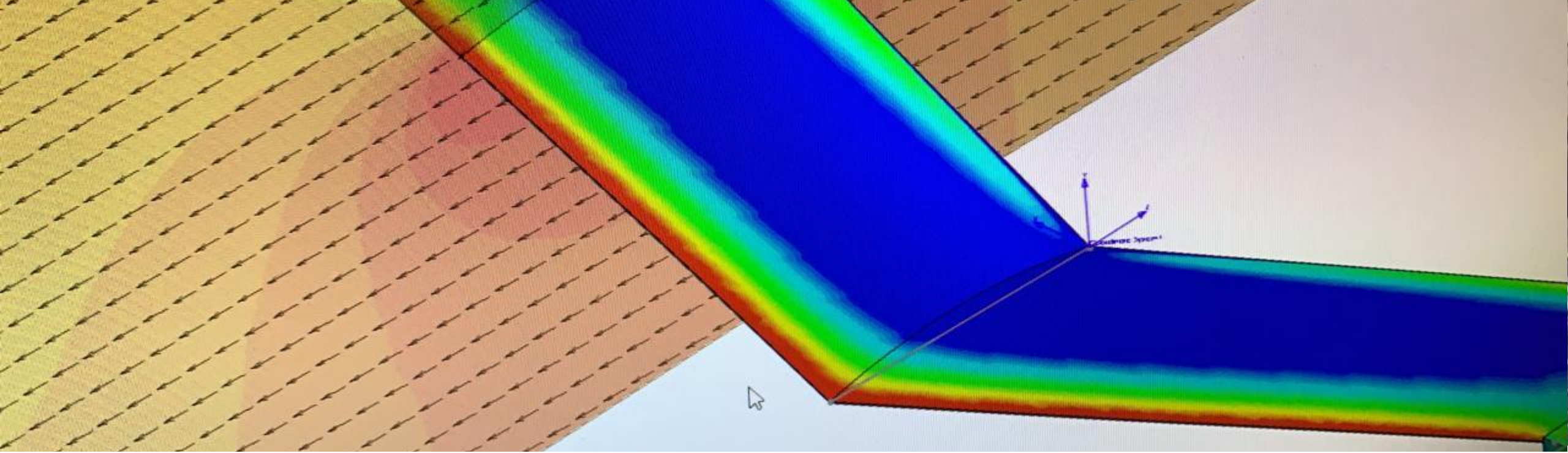
**180 - 500 Hp**

465+ nm range with 130 gal (3.6 mpg) @30 knots

 **HYFOIL 32**

<b>LOA and draft</b>	LOA: 31'6" Draft 21"
<b>Beam</b>	10' 5" (8' 6" deflated)
<b>Twin internal combustion engines</b>	Min: twin 90 Hp      Max: 500 Hp total 465+ nm range with 130 gal (3.6 mpg)
<b>Twin electric engines</b>	Min: twin 80 kW    Max: 160 kW total 50+ nm range
<b>Cruising MPH and Maximum MPH</b>	35 mph max efficiency 70 mph max speed
<b>Dry weight</b>	4000 lb.
<b>Passenger capacity</b>	16 passengers
<b>Construction</b>	Available in fiberglass or carbon fiber





## What makes HYFOIL even better

Extra ingenuity makes HYFOILs remarkably adept at handling adverse sea states. The engines are angled so that the propellers are slightly outboard of the tunnel for maximum grip and to provide extra control while leaning in to a turn. The tunnel has a double arc shaped ceiling for better water redirection and aeration which help create an air cushioned ride. The foils help auto-correct trim so that the vessel keeps a level attitude. If ever a HYFOIL launches off of a wave, the landing impact is dampened due to the combined foil and tunnel design.

Best of all, the foils are stationary and don't protrude below the hulls, working effortlessly to make excursions more enjoyable and greener.

32



HYFOIL  
MARINE

*Available with single or dual engines  
Configured as center console or twin  
Offered with carbon fiber or GRP hulls*

*Three foil design sets: cruise, sport, and eco*







The **HYFOIL 32** is amazingly maneuverable at high and low speeds. HYFOIL modular top-side layouts can be configured and accessorized to suit luxury and functional requirements, making on-the-water excursions even better.



Running fully battery-powered  
commercial vessels  
since 2020

Ready to fill 2024 orders in our new  
USA-based green manufacturing facility.

Email: [info@HyfoilMarine.com](mailto:info@HyfoilMarine.com)  
Phone: 833-4-HYFOIL

